

# ANCHORAGE YACHT CLUB

## RACE INSTRUCTIONS - "ALL or ONE" SERIES 2014

All races will be governed by the 2013- 2016 Racing Rules of Sailing by ISAF and the rules of the LMPHRF except as altered by the following sailing instructions. **A PFD must be worn by each crew member in a solo and double sections when the yacht is away from the dock. Anchorage recommends boats in the crewed sections wear a PFD.**

- 1) **SCHEDULE:**  
The race series is four races and begins Saturday May 24<sup>th</sup>, July 12<sup>th</sup>, August 9<sup>th</sup>, and September 13<sup>th</sup>.
- 2) **ENTRIES:**  
Sailing yachts may be entered by completing the registration and rating form and paying the series-racing fee on-line, or submitted at the skippers meeting.
- 3) **NOTICES:**  
Notices to competitors (if any) will be posted on the AYC web site ([www.anchorageyachtclub.com](http://www.anchorageyachtclub.com)) and/or announced on VHF channel 69 prior to the start of the race.
- 4) **CHANGES:**  
Any change in the sailing instructions will be posted on the AYC web site at least 24 hours before the day that they will take effect. Oral changes may also be at the skipper meeting.
- 5) **STARTING TIMES:**  
Starts will be in the reverse PHRF or pursuit start format. Start times will be given at the skippers meeting.
- 6) **STARTING AREA:**  
Between the Green 3 buoy and the Waukegan Harbor Light (see mark coordinates below).
- 7) **RACING COURSE:**  
Course direction will be determined at the skippers meeting, but usually a 13.25 nm course, using the marks listed below (in marks coordinates section).
- 8) **IDENTIFICATION - CHECK IN:**  
Racing yachts shall check in at the skippers meeting.
- 9) **RADIO:**  
Each yacht must carry a VHF marine radio telephone with at least channels 6, 16, 22, 6 and WX. Channel 69 will be used for required reporting between competitors and committee boat. All solo racers' radios must be accessible to racers while at the helm. This can either be an adaptation of the permanent radio or a second radio such as a hand-held.
- 10) **THE FINISH:**

Yachts must finish within 200 yards west of the Green Buoy #3. Yachts will take their own finish as they pass a line between the green buoy "3" and the white with green striped Harbor Light on the Waukegan pier head. Each skipper is responsible for recording the actual finish time of their yacht and if possible the yacht directly ahead and astern. Submit your finish time to the race committee 1 hour after you finish or 1 hour after the AYC Race Officer docks. The AYC Race Officer will be determined at the skippers meeting.

11) **TIME LIMIT:**

The time limit is 6 hours after the last start for all yachts.

No yacht will be scored after 6 hours has elapsed from the time of the last start. Yachts not finishing within 6 hours of the last start will be scored as Did-Not-Finish (DNF). If no yacht completes the course within 6 hours of the last start, the race is abandoned.

12) **PROTESTS:**

The protester must (at the first reasonable opportunity); 1) hail the skipper being protested immediately; 2) fly a red (protest) flag; and, 3) notify the AYC Race Officer of the pending protest. Protests shall be written on an **official protest form** and given, within **one hour** after the last boat finishes, to the AYC Race Officer. If the hearing cannot be held the same day, the hearing will be scheduled no later than 14 days after the incident. Race results will be re-scored, as necessary, based on decisions of the protest committee.

13) **SCORING:**

The low point scoring system will be used. 1 point for first, 2 points for second, 3 points for third, etc.

14) **ALTERNATE PENALTIES:**

Refer to the 2013- 2016 Racing Rules of Sailing by ISAF concerning penalty turns. A boat may clear itself by a one turn (Touching a Mark) or two turns (When Boats Meet) penalty after getting well clear of other boats as soon after the incident as possible. If the boat caused injury or serious damage or gained a significant advantage in the race or series by her breach her penalty shall be to retire.

15) **AUXILIARY POWER:**

Yachts are considered to be racing after the preparatory signal, for their respective starts, and must be under sail power only, at the time the preparatory signal is made. (Four minutes prior to their section's start)

16) **WITHDRAWING:**

Yachts Withdrawing (WDR) from the race are required to notify the race committee.

17) **LMPHRF CERTIFICATES:**

A current PHRF certificate is recommended for all yachts. Yachts not having a current certificate will be assigned an average "book" rating less a possible six second penalty. There will be no retroactive favorable adjustment of this rating for races completed prior to submittal of a valid PHRF certificate. Anchorage Yacht Club will from time to time apply certain modifications to PHRF as determined by the Race Committee.

18) **WHISKER POLES** (rule 50.2):

Only one whisker or spinnaker pole (length not to exceed the "J" measurement on your PHRF certificate) shall be used at one time. When in use it must be attached to the foremost mast and may be carried on the same side or the opposite side of boat on which the boom has been set. Poles that can be extended beyond the "J" length must be banded to indicate the maximum proper length. No handheld poles or devices allowed.

19) **HEAD SAILS:**

Spinnakers (asymmetrical spinnakers, cruising spinnakers, bloopers or gennakers) are only allowed by boats registered within a AYC spinnaker section. A staysail with a tight luff may be used subject to LMPHRF regulations. On leeward legs two headsails may be used by the JAM section boats, but only one headsail can be hoisted in the headfoil.

20) **SKIPPERS MEETING:**

Meetings are scheduled at 9:00 am the beginning of the race event at the Waukegan Port Authority patio (harbor house) in Waukegan harbor.

21) **ELIGIBILITY:**

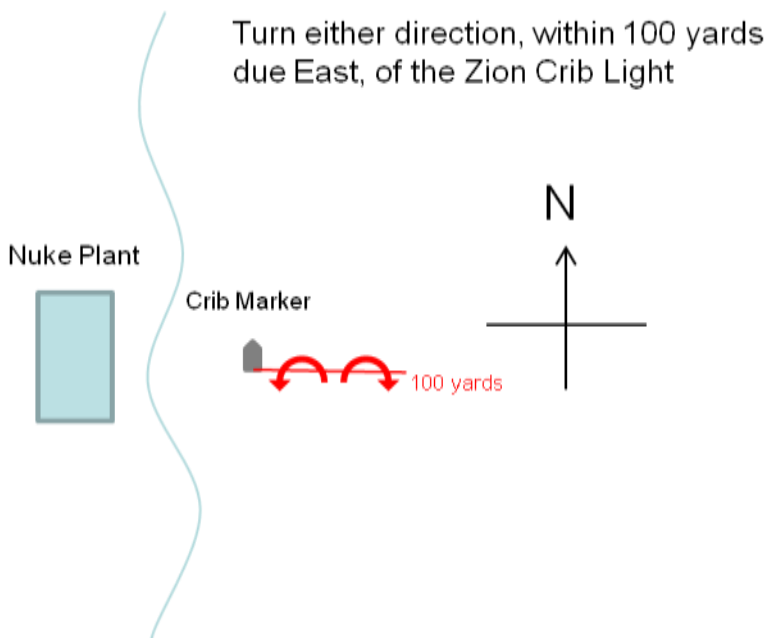
**Eligibility of Yachts:** The race is open to offshore yachts 26 to 45 feet LOA. Larger and smaller yachts will be considered on an individual basis. The condition of the yacht and the equipment she carries should meet US Sailing "Recommendations for Offshore Sailing" for category-three races. The following modifications, amendments, and supplements must be observed:

1. Liability insurance must be carried by each yacht.
2. All Coast Guard safety requirements must be met by each yacht.
3. Each yacht must carry a VHF marine radio telephone with at least channels 6, 16, 22, 69 and WX. Channel 69 will be used for required reporting between competitors. All solo racers' radios must be accessible to racers while at the helm. This can either be an adaptation of the permanent radio or a second radio such as a hand-held.
4. Correct sail numbers must be displayed on the mainsail, spinnakers, and all headsails larger than a working jib.
5. Each yacht should carry enough fuel, water, and food to be self-sufficient for the duration of the course, as if cruising.
6. Solo and Double yachts must have a system such as jack lines, running from near the cockpit to the foredeck, so that the crew can move from the cockpit to the forestay without disconnecting the safety harness.
7. Yacht in the solo or double-handed sections must have a safety harness properly fitted and worn at all times when not below decks. On double-handed yachts, any time a crew member leaves the cockpit they must be hooked to the jack line. Solo racers must be hooked to the jack line at all times while above deck.
8. Each yacht must have a system for reboarding in place. This may include looped lines or a ladder.
9. A PFD must be worn by each crew member when the yacht is away from the dock for solo and double-handed sections.
10. For solo and double yachts a system for self-steering the yacht on a compass course or by apparent wind only, to exceed the capabilities of lashing or locking a wheel or tiller.

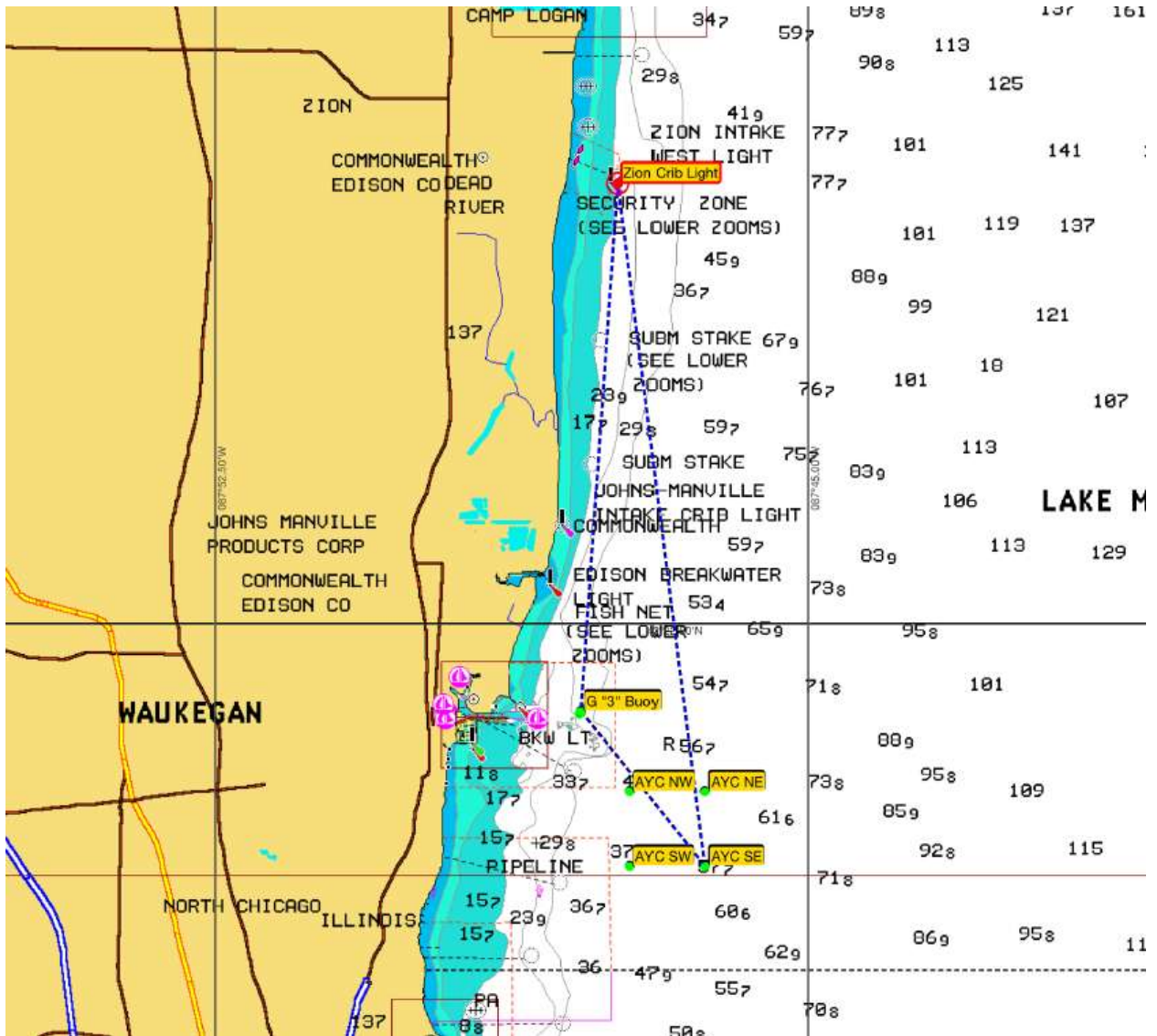
**Inspection:** All yachts will be subject to inspection, at any time. If any requirement 1 through 10 is not met, the yacht will be disqualified. Fully crewed yachts need to only comply with requirements 1-5. All requirements are recommended for all yachts.

## 22) MARK COORDINATES

Buoy Identifier	Latitude (DD MM.MMM)	Longitude (DD MM.MMM)
Green “3” buoy (pin)	42 21.653	87 47.876
SE (south east course mark)	42 20.262	87 46.307
Zion Crib (east day marker)	42 26.608	87 47.474



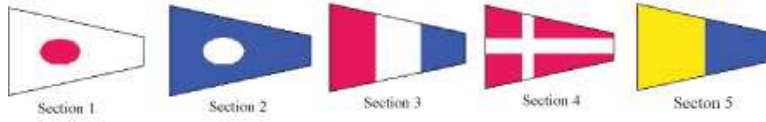
## 23) COURSE OVERVIEW



### Course Flags



### Section Flags



Individual Recall



General Recall



Postponement



Race Abandoned



Come within Hail of this boat



Shortened course